



# ZWP 28

Robust design with granite machine base for highest accuracy

The high-quality ZWP 28 is characterized by an extremely stable construction and thus enables measurements of highest accuracy.

The setting value of the axis distance is kept by a scale, even if the carriage is moved. An exact height adjustment at the steady centre attachment is done by cranks. The very flexible construction makes adjustments as well as the assembly of many accessories possible without any problems. Optionally, the ZWP 28 is also available in a flying version- i.e. without accessories for the upper tip.

## Technical Data

Centre distance with special mounting	38 - 128 mm ≥ 31 mm between tips ≥ 26 mm single end mounting
Max. specimen diameter	180 mm
Height adjustable	yes
Steady centre attachment on both sides	optional
Measuring force setting	2,5-19 N

**FRENCO GmbH**

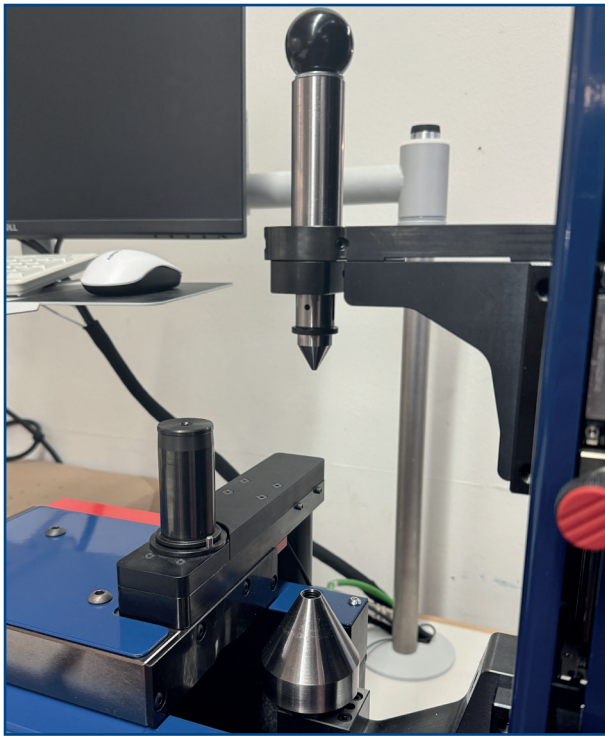
Gear + Spline Technology

Jakob-Baier-Str. 3 • D - 90518 Altdorf

[www.frenco.com](http://www.frenco.com)

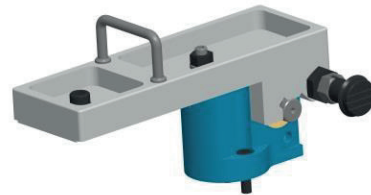
*pure  
perfection*

**FRENCO**



## Optional accessories

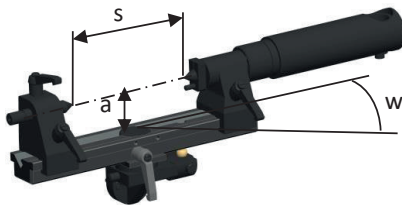
**Mounting for internal gear inspection, for mounting of master gear**



**Fixture for worms,  
Mounting between tips**

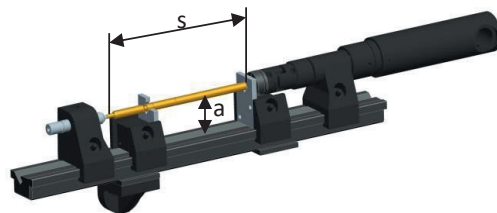
$s_{MAX} = 150 \text{ mm}$   
 $a = 40 \text{ mm}$

$w = \pm 45^\circ$



**Fixture for worms,  
mounting trough prisms  
(bearing seat as reference)**

$s_{MAX} = 250 \text{ mm}$   
 $a = 40 \text{ mm}$



**Adapter for small centre distances:  
Pin arbour attachment**



pin  
 $e_{MIN} = 16 \text{ mm}$



pin  
 $e_{MIN} = 22 \text{ mm}$

**FRENCO GmbH**

Gear + Spline Technology

Jakob-Baier-Str. 3 • D - 90518 Altdorf

[www.frenco.com](http://www.frenco.com)

pure  
perfection

**FRENCO**